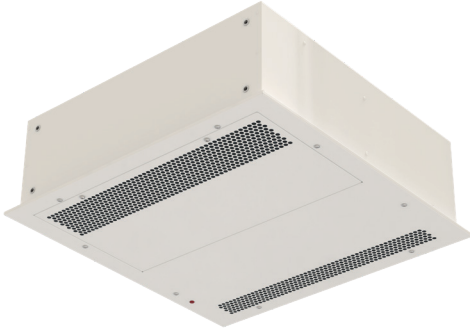




Characteristics

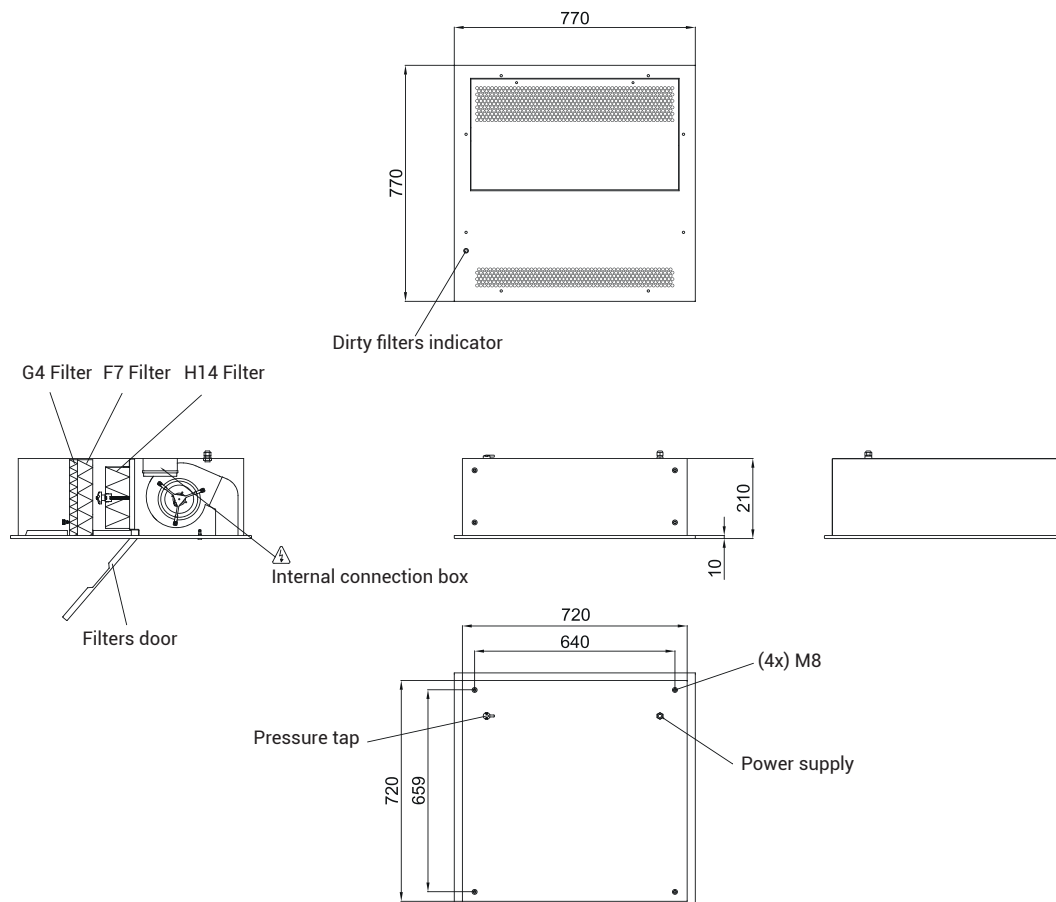


- High-efficiency air purification and filtration unit with three stages of filtration:
 - G4 (ZLM) pre-filter according to EN779 standard
 - F7 intermediate filter according to EN779 standard
 - H14 absolute filter with 99.995% efficiency according to EN1822 and sealed with polyurethane for 100% air filtration.
- Continuous recirculation of the indoor air through the three filtration stages guarantees air purification by capturing particles and pollutants such as: dust, pollen, spores, bacteria, viruses and fine particles PM10, PM2.5 and PM1.
- Self-supporting galvanised steel frame, prepared for recessed installation in false ceilings. Easy-access register panel for filter replacement.
- Suction and discharge grille (maintenance-free) integrated in a RAL9016-coloured frame. Other finishes available on request.
- Centrifugal fan with external rotor EC motor with very low power consumption and noise level.
- Cassette with a constant flow rate up to 300 m³/h. The fan is self-regulating depending on the level of dirt in the filters to maintain the same flow rate at all times.
- Visual indicator of dirty filter alarm by means of differential pressure switch.
- Optional: ON/OFF control with constant flow regulation from 0 to 100%.

Specifications

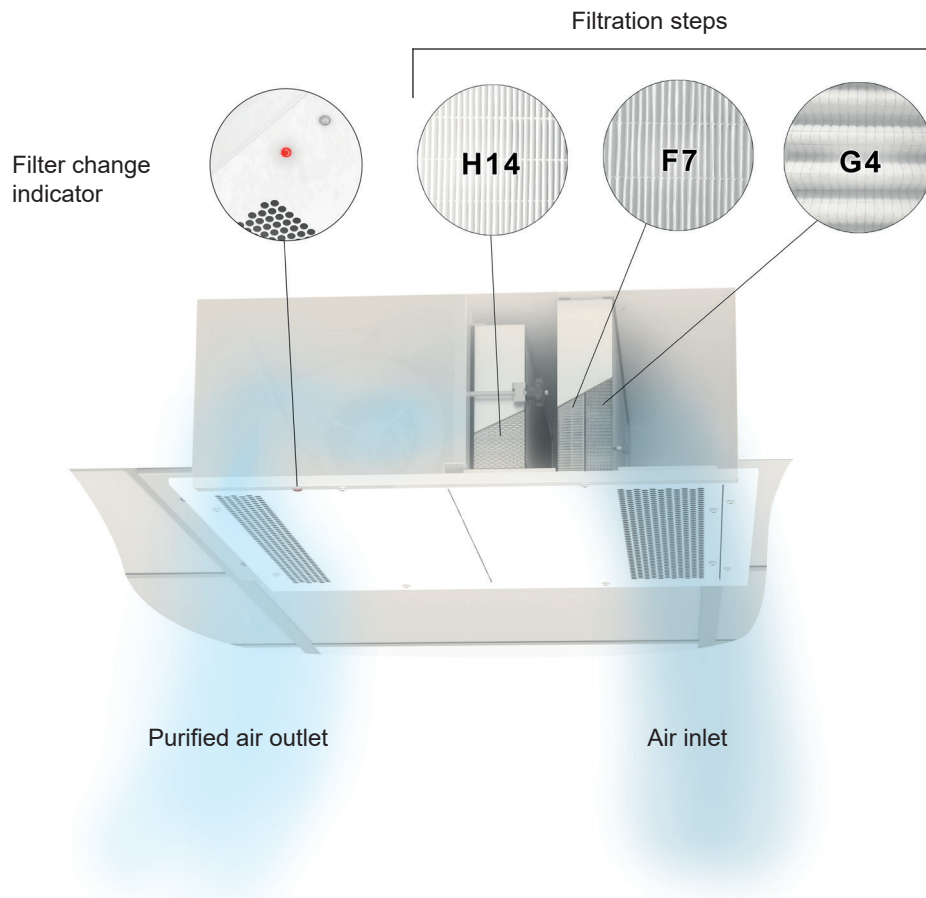
Model	Airflow m ³ /h	Fan Power 230V-50Hz W	Fan Current 230V-50Hz A	Noise Level (3 m) dB(A)	Weight kg
K7 770 HEPA	300	61	0,7	55	32

Dimensions





Functioning infographics



Filters maintenance

